

VISUAL
APPROACH
CHART

AD ELEV 401FT
HEIGHTS RELATED TO
THR RWY17 ELEV 376FT
VAR 5°E (2020)

TWR/APP 133.075

SPARE 124.175

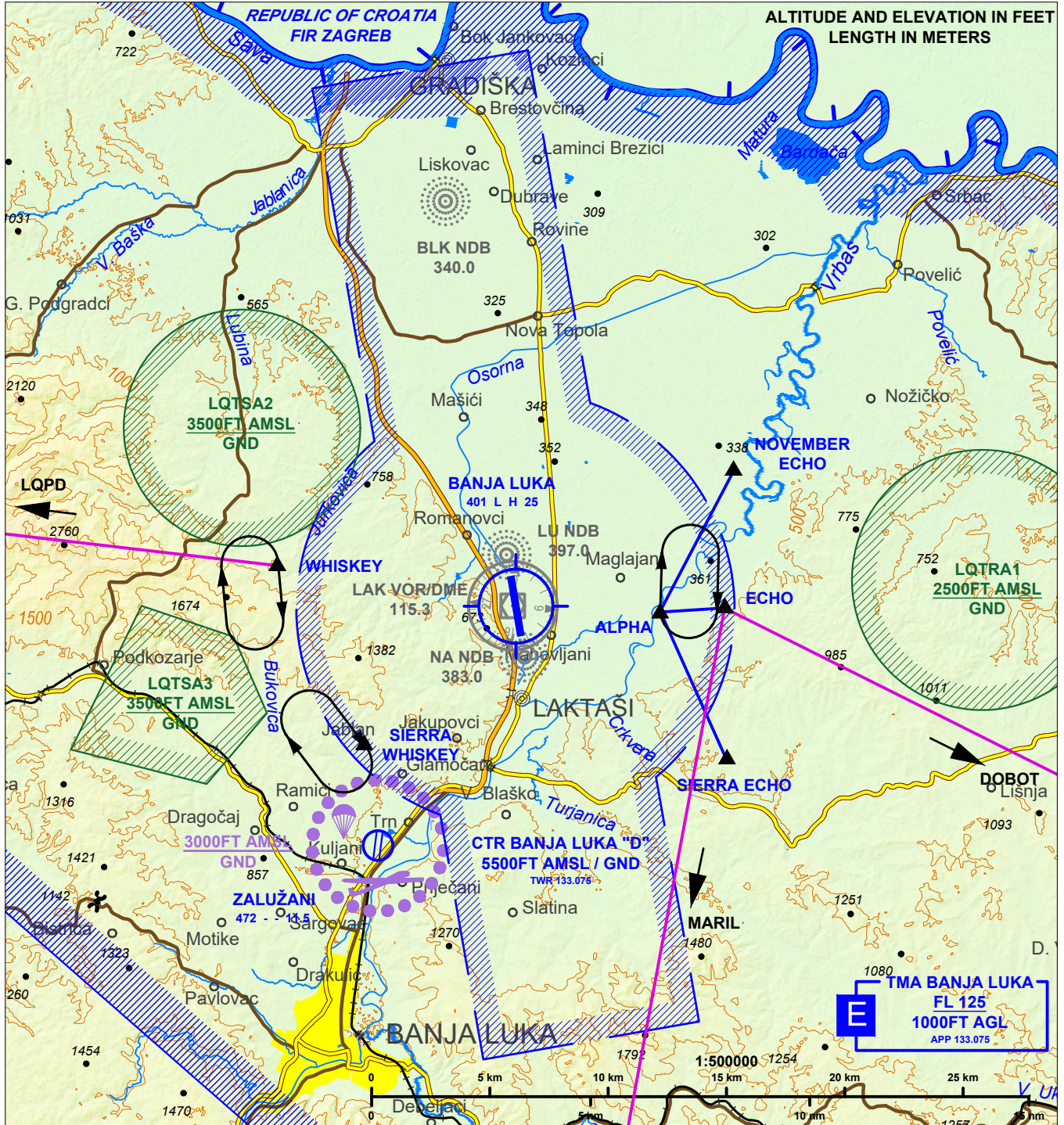
FIC 135.575

TA
10000FT

ARP COORD
44° 56' 29.03" N
017° 17' 50.91" E

BANJA LUKA
(LQBK)

CHANGE: VOR LAK COMPASS ROSE ORIENTED TO MAG NORTH, FREQUENCIES ADDED ON THE CHART, ZONES UPDATED



REPORTING POINTS	COORDINATES	DEFINITION
WHISKEY	44° 57' 22" N 017° 10' 10" E	Village G.Jurkovic
ECHO	44° 56' 30" N 017° 24' 34" E	Village Kriskovci
SIERRA WHISKEY	44° 53' 18" N 017° 13' 02" E	Village Jablan
NOVEMBER ECHO	44° 59' 39" N 017° 24' 51" E	Village Kukulje
SIERRA ECHO	44° 53' 04" N 017° 24' 42" E	Village Drugovici
ALPHA	44° 56' 23" N 017° 22' 30" E	--

Two way radio communication mandatory.
Contact Tower at or before reporting point.
For latest informations consult relevant publications and NOTAMS.

Special VFR minima:
VIS ≥ 1500M (FIXED WINGS), 800M (HEL); ceiling ≥ 500FT

CAUTION: Power lines and obstacles are not shown.

THIS PAGE INTENTIONALLY LEFT BLANK